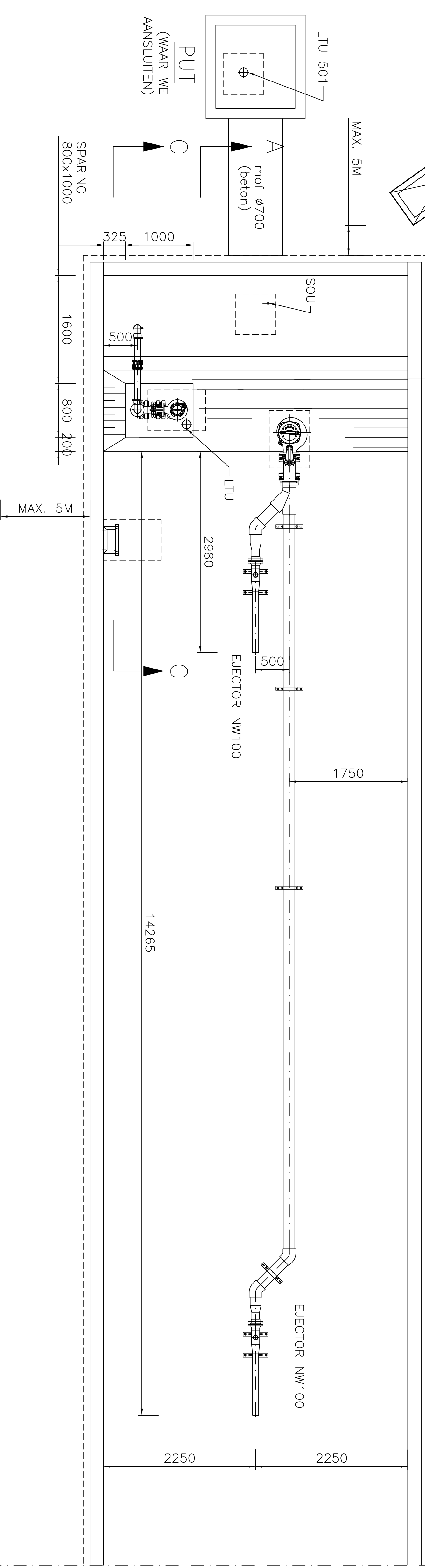
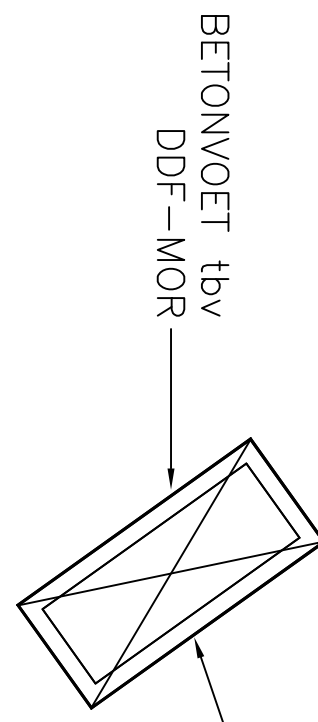
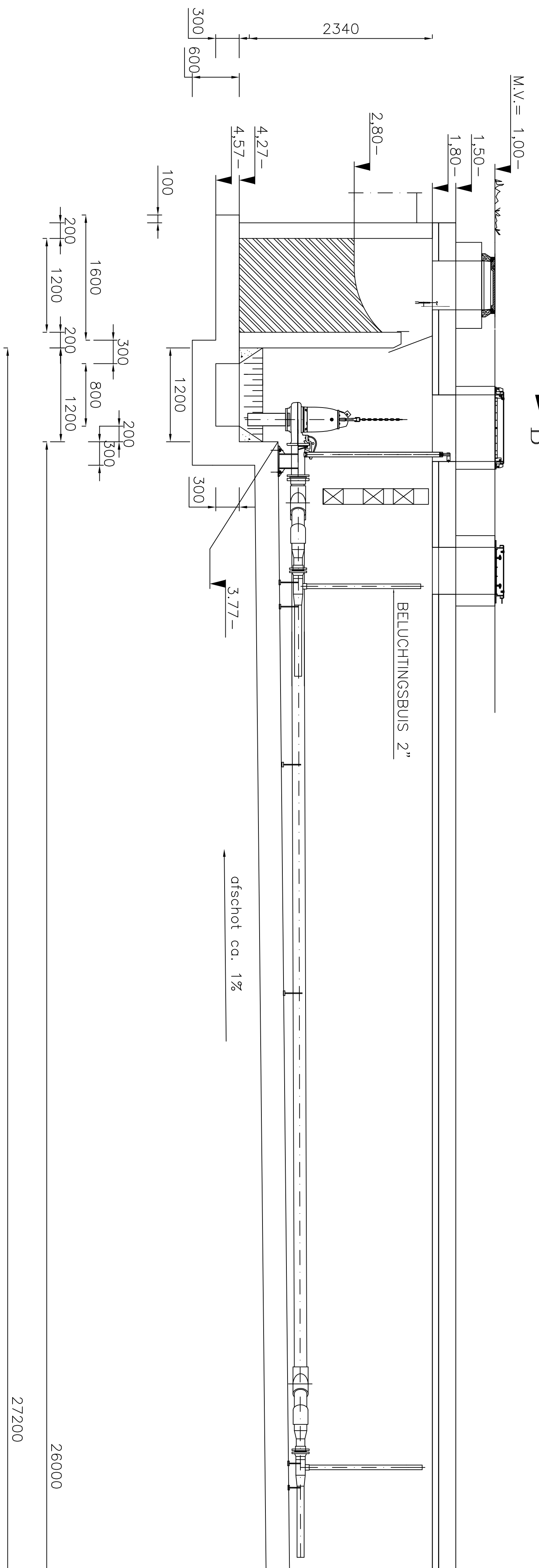


BOVENAANZICHT

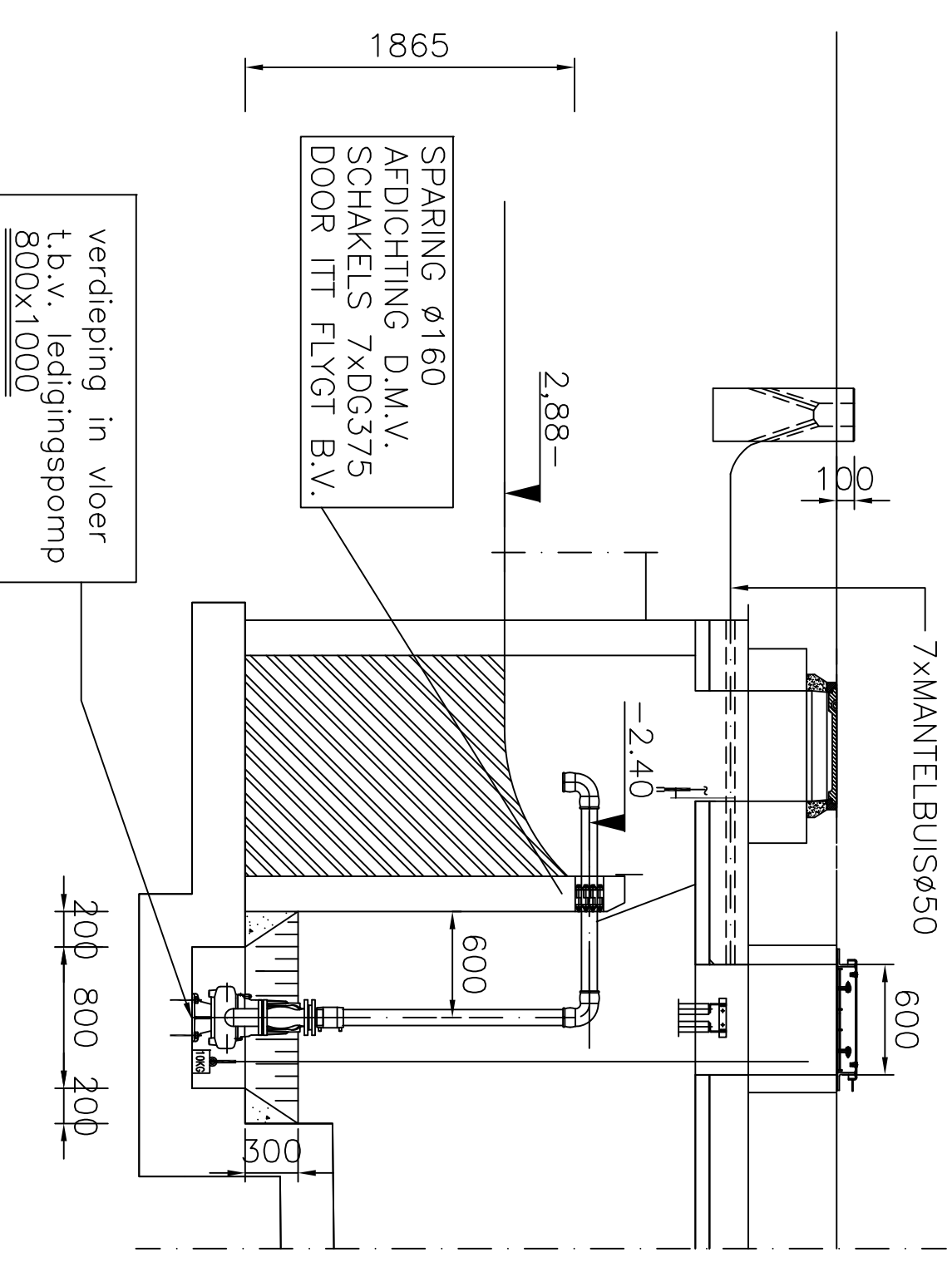
POSTIE IN OVERLEG DIRECTIE
mobt. KBDV EN SCHAKELKAST



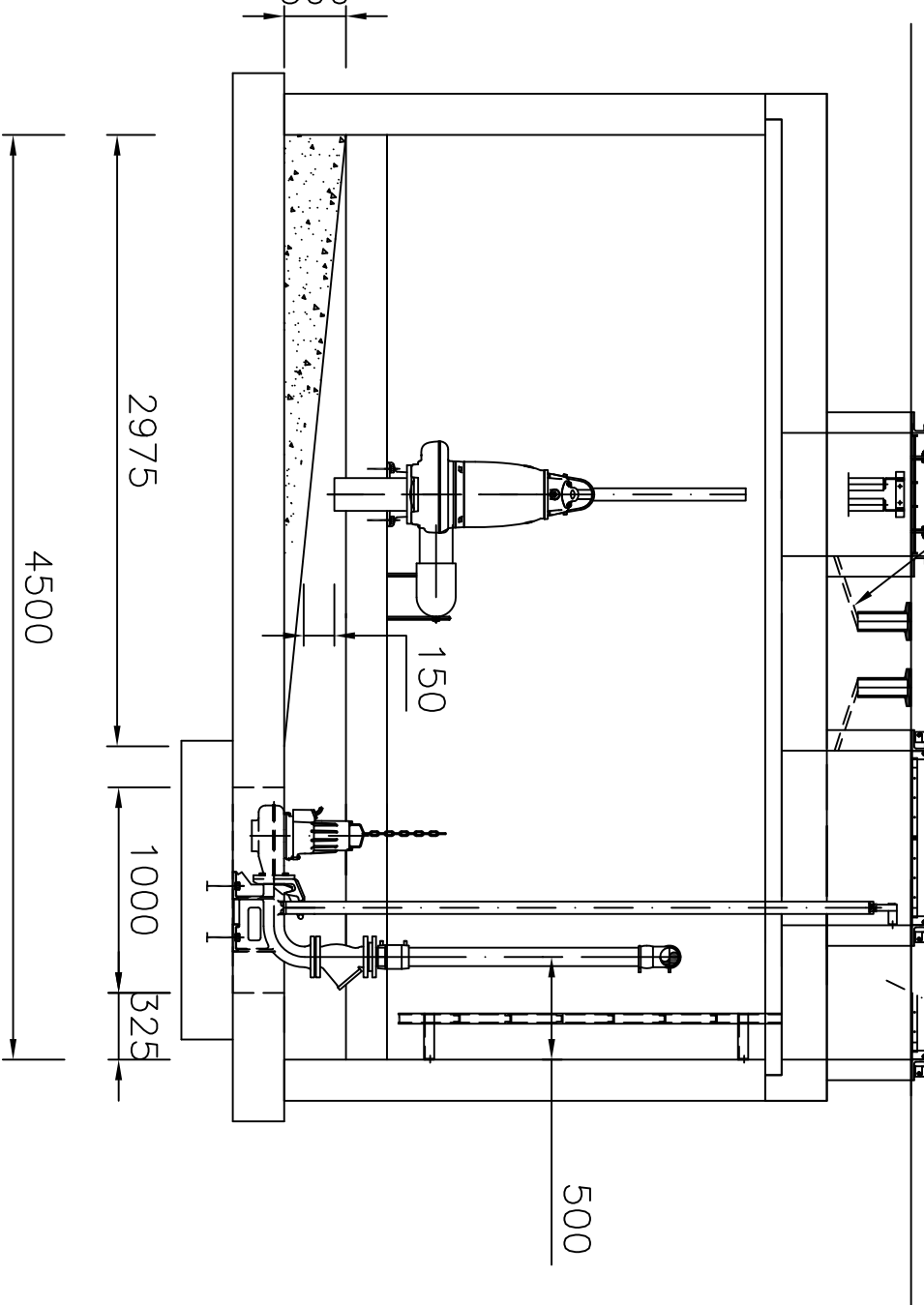
BOVENAANZICHT ZONDER BOVENPLAAT



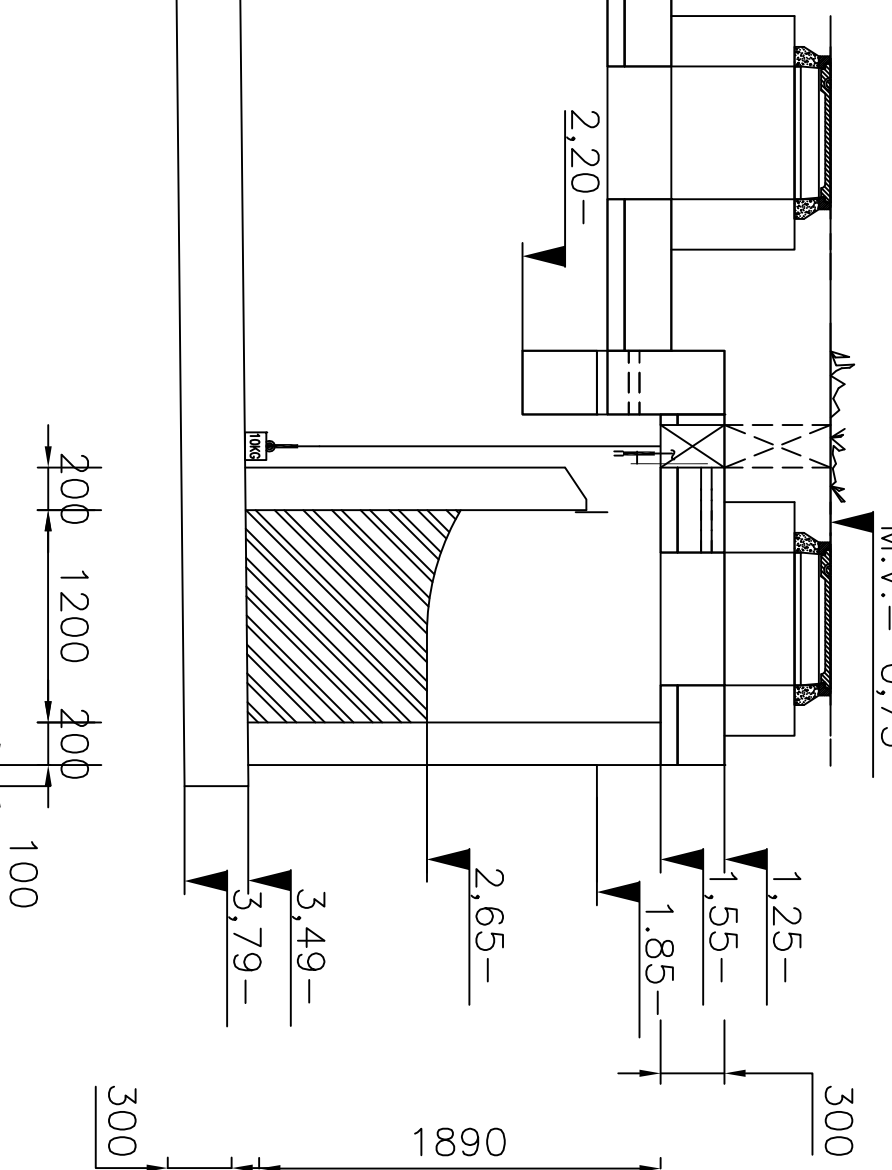
DOORSNEDE A-A



DOORSNEDE C-C

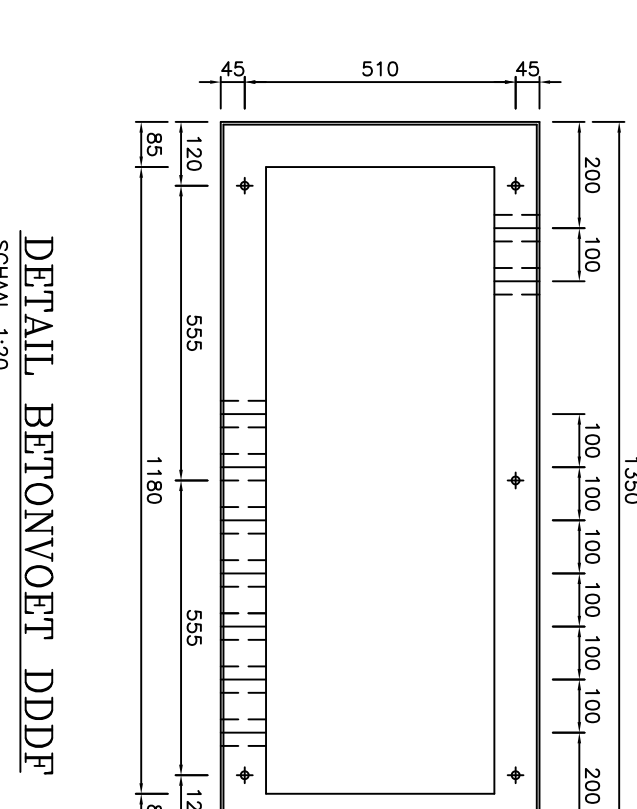



DOORSNEDE B-B



BODEGRAVEN

C	03-02-2006	CI	WIZJINGEN CONFORM OPEREREN KLIANT
B	26-01-2006	CI	WIZJINGEN CONFORM OPEREREN KLIANT
D	06-03-2006	CI	WIZJINGEN CONFORM OPEREREN KLIANT
Wfz	Datum	Ontwerp	
Operatie	GEBO SCHOLLS BV		
	2302 BG LEDEN		





ITT Industries

ITT Flygt B.V.

Postbus 1126
1300 BC Dordrecht
Tel. (078) 654 84 00
Fax. (078) 651 09 36
E-mail: flygt@flygt.com

BBB HOORBLAD

SPOELPOMP NP3153.181WT W.433

9kW

NW150/PVCø160 2xELECTOR NW100

LEDINGSPOOMP DP3068.180WT W.473

400V, 2kW

NWB0/HDFø90

05M0929/03

Fte: 05M0929-00-03

Bied: 01 van 01

D